



SHIVA TRUST

SHARADCHANDRAJI PAWAR HOMOEOPATHIC MEDICAL COLLEGE & HOSPITAL, SHRIRAMPUR

A/P Wadala-Mahadev, Shirampur-Newasa Rd, Tal- Shirampur, Dist Ahmednagar (M.S)

Phone No: (02422) - 246310 Fax: 246210

Email-ID: sphmc111@gmail.com Pin Code: 413739

4.1.3 Availability and adequacy of general campus facilities

10	Collage Security	Available
Sr no	Facility	remark
1	Hostels	Separate boys and girls hostel with adequate facilities
2	Medical facilities	College having its own hospital with different Opd and Ipd department and also casualty department in emergency
3	Toilets /Wash rooms	In college and at hostel toilets are available at each floor
4	Canteen	Available of canteen in college campus area
5	Transport and parking	Transport facility available for students and staff Parking facility of vehicle for student and staff
6	Staff Quarters	Staff quarters with all adequate facilities
7	Homoeopathic garden	With all adequate medicinal plants for students for their studies
8	Solar plant, Rain water harvesting	Available
9	Facilities of STP, water cooler,	Available

SHIVA TRUST

SHARADCHANDRAJI PAWAR HOMOEOPATHIC MEDICAL COLLEGE & HOSPITAL, SHRIRAMPUR

A/P Wadala-Mahadev, Shrirampur-Newasa Rd, Tal- Shrirampur, Dist Ahmednagar (M.S)

Phone No: (02422) - 246310 Fax: 246210

Email-ID: sphmc111@gmail.com Pin Code: 413739

4.1.3 Availability and adequacy of general campus facilities and overall ambience

Response: The general campus facilities available to students, staff and patients are of superior quality and adequate in quantity. The facilities are well maintained following industry standards.

Campus Facilities:

Green Campus: Our campus stands by the theme "Go Green" Our campus is sheathed with various plants and trees making it more pleasant and pollution free.

Security: Adequate security facilities are provided to students, staff and the patients who are inside our campus. CCTV cameras are installed at all vantage points in the campus and they are monitored continuously. Also turnstiles at exit points ensure access only to students and employees to the hostels and academic premises. Well trained security personnel are posted at all strategic locations in the campus.

Hostels: Hostels for men and women are provided with indoor gym facility, yoga room,

swimming pool, study area etc. Safety and security are ensured with CCTV surveillance. No doubt that our hostels are a home away from home to the inmates.

Staff Quarters: Accommodation for teaching and non-teaching staff is provided in the campus. The inhouse employees are allocated apartments of different sizes to villas with adequate car and two-wheeler parking facilities

Medical Facilities: Hospitals with facilities of emergency, OPD services, intensive care units and pharmacy provide timely treatment to all the stakeholders round the clock

Canteen: The magnificent food court of the university provides all types of cuisines including South Indian, North Indian, continental and international delicacies. Adequate car and two-wheeler parking facilities are available to students, staff and visitors. High speed internet facility is made available throughout the campus

Sports and Games: To encourage extra-curricular activities, our university has established several sports and Games facilities which include basketball court, cricket ground, tennis court, football ground and indoor games

Transport: Comfortable and convenient bus transport is provided to the students and employees of CARE for easy mobility to the institute and back. Pollution-free battery-driven vehicles are operated for movement within the campus. Also plenty of bicycles are available

to students to move within the campus.

Sewage Treatment: Plant functioning in the university takes care of the solid and liquid waste management as per protocols. The treated waste water is reused for gardening and sanitary purposes

SHIVA TRUST'S
SHARADCHANDRAJI PAWAR HOMOEOPATHIC MEDICAL COLLEGE & HOSPITAL, SHRIRAMPUR

HOSTELS FACILITIES FOR BOYS AND GIRLS



GIRLS HOSTEL



अहमदनगर, महाराष्ट्र, भारत
JP99+4MF, अहमदनगर, महाराष्ट्र 413739, भारत
Lat 19.617865°
Long 74.719173°
05/10/23 10:40 AM GMT +05:30

GPS Map Camera



Ahmednagar, Maharashtra, India
JP99+29H, MH SH 44, Maharashtra 413739, India
Lat 19.617638°
Long 74.718801°
29/09/23 11:07 AM GMT +05:30

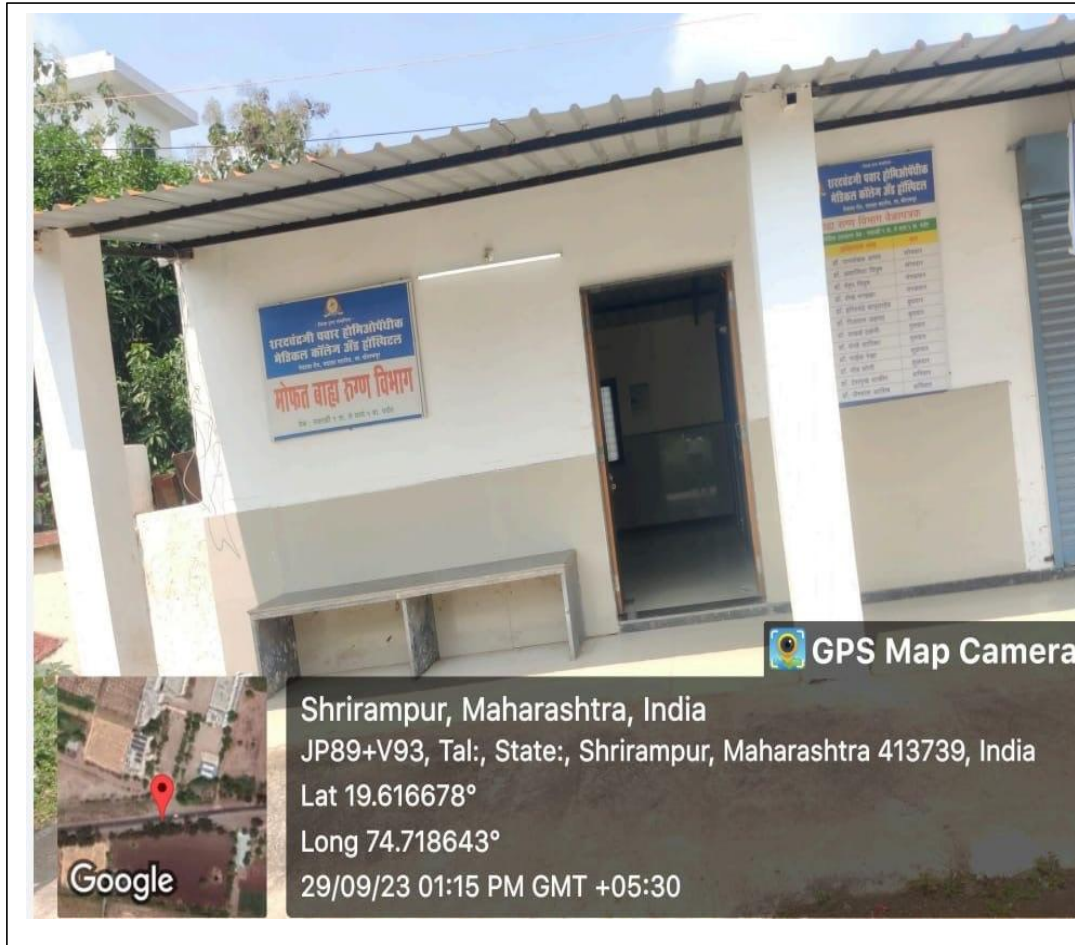
GPS Map Camera

SHIVA TRUST'S
SHARADCHANDRAJI PAWAR HOMOEOPATHIC MEDICAL COLLEGE & HOSPITAL, SHRIRAMPUR

MEDICAL FACILITIES



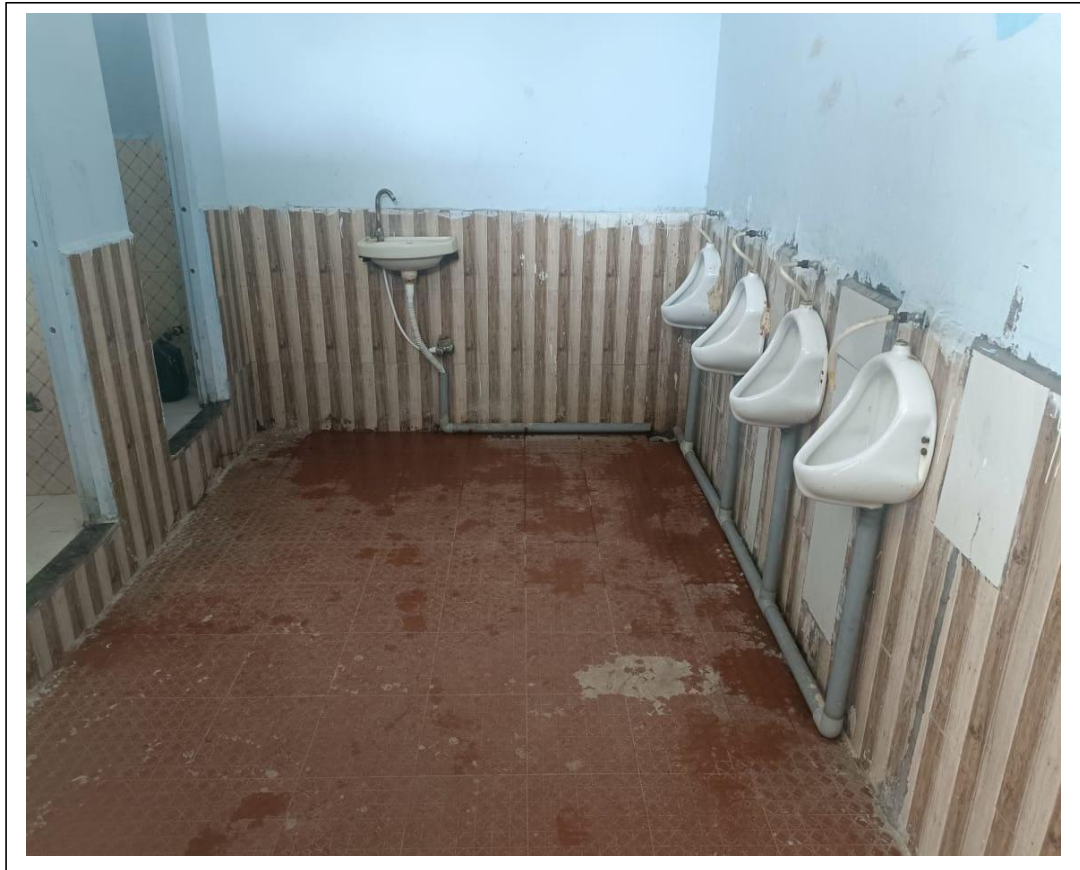
COLLEGE OPD



Toilets /Wash rooms



Toilets



SHIVA TRUST'S
SHARADCHANDRAJI PAWAR HOMOEOPATHIC MEDICAL COLLEGE & HOSPITAL, SHRIRAMPUR

COLLEGE CANTEEN

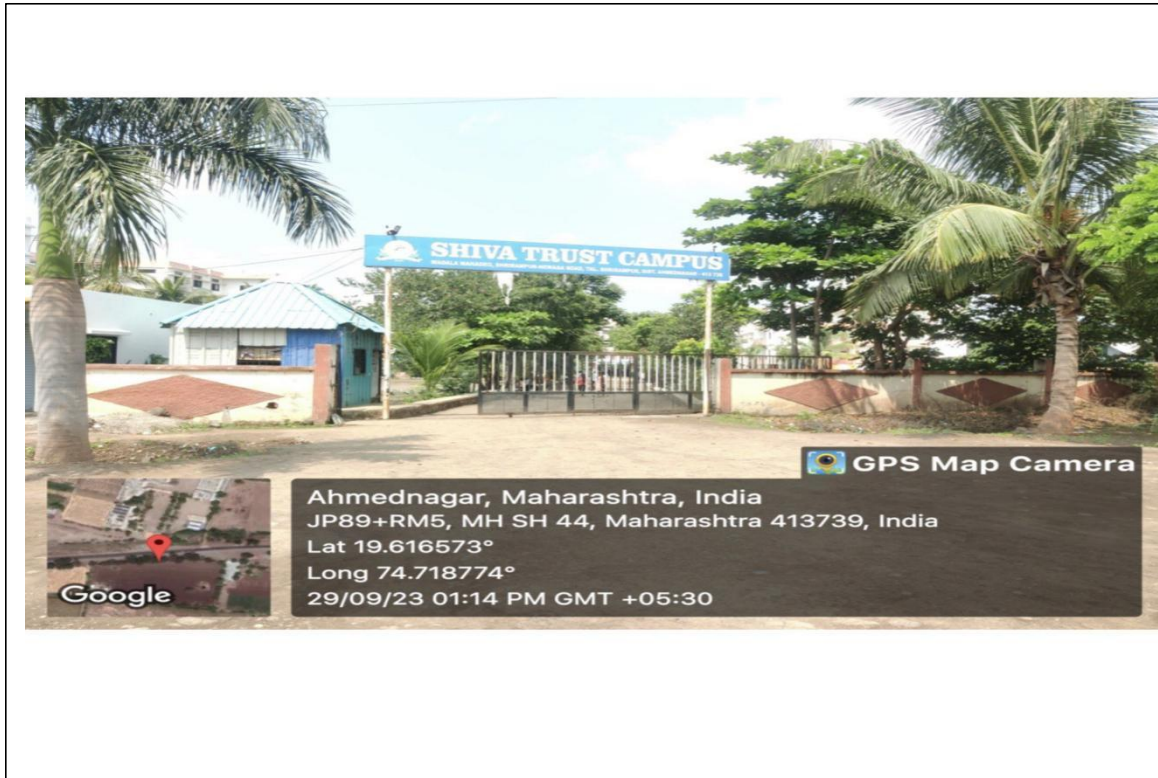


CANTEEN



SHIVA TRUST'S
SHARADCHANDRAJI PAWAR HOMOEOPATHIC MEDICAL COLLEGE & HOSPITAL, SHRIRAMPUR

TRANSPORT AND PARKING



PARKING



BUS FACILITY



PARKING



SHIVA TRUST'S
SHARADCHANDRAJI PAWAR HOMOEOPATHIC MEDICAL COLLEGE & HOSPITAL, SHRIRAMPUR

STAFF AND QUARTERS



STAFF QUARTER

v



STAFF QUARTER



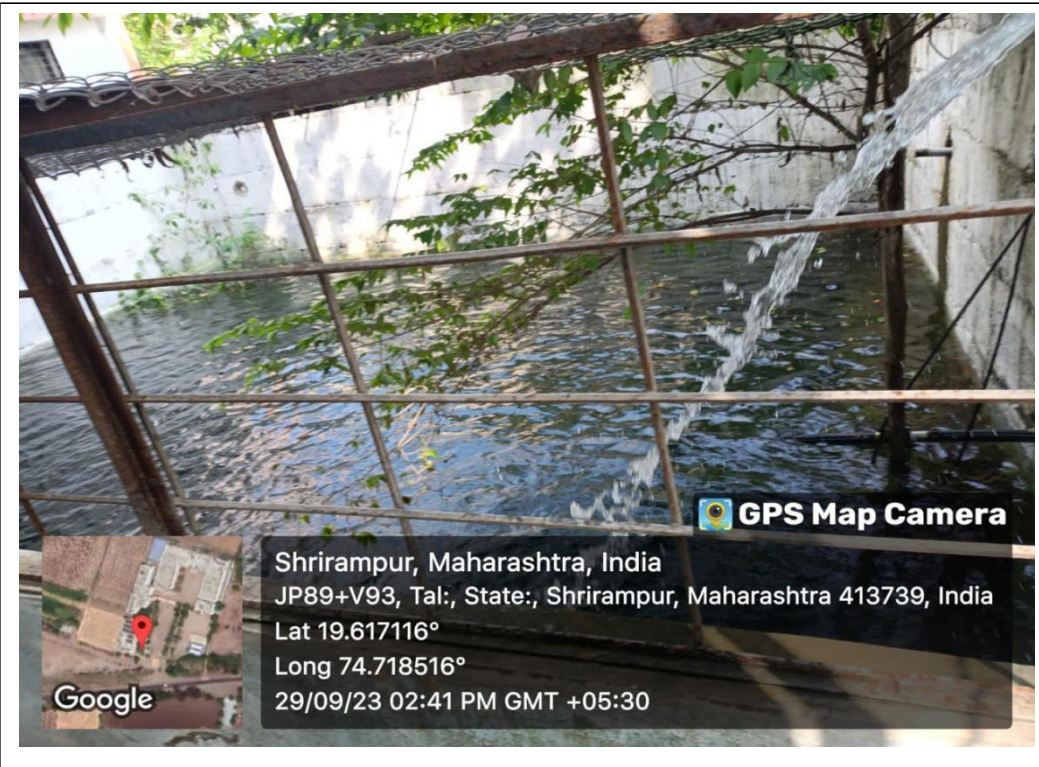
HOMEOPATHIC GARDEN



HOMEOPATHIC GARDEN



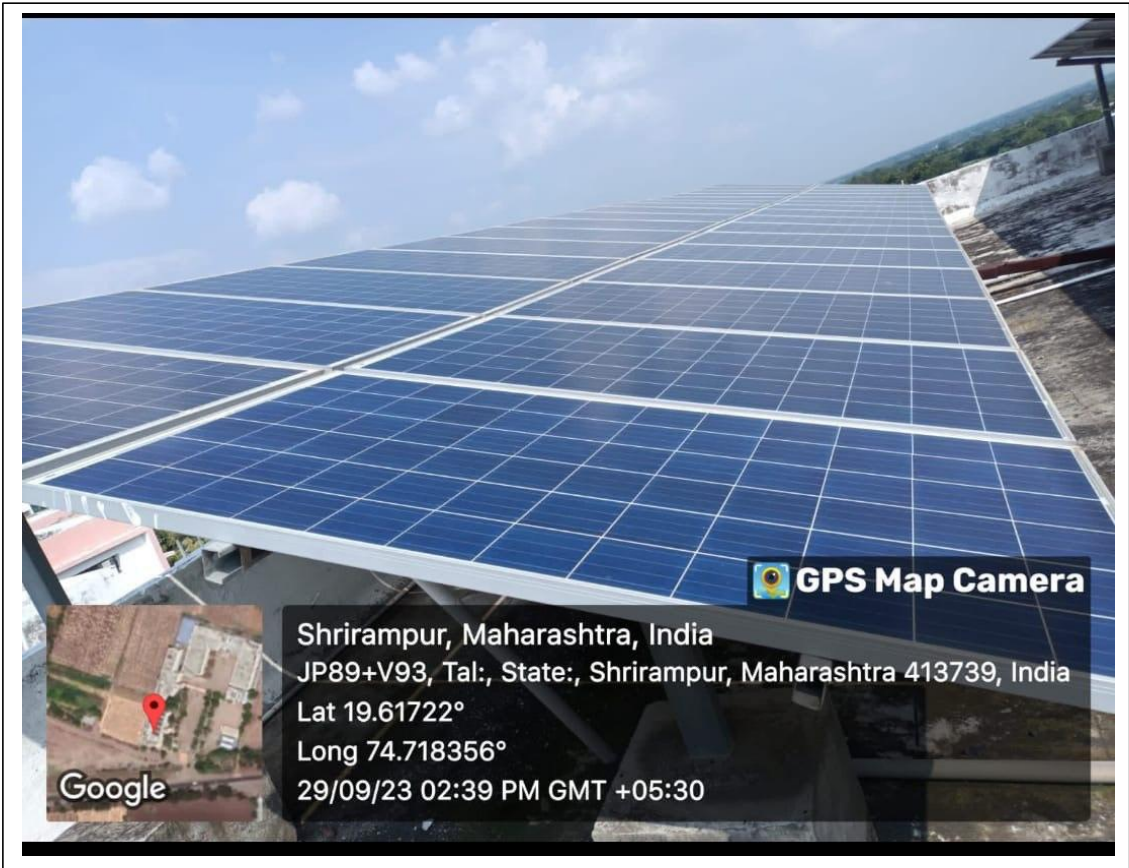
SOLAR PLANT



SOLAR PLANT



SOLAR PLANT



Facilities of STP, Water cooler



COLLEGE SOLAR PLANT

